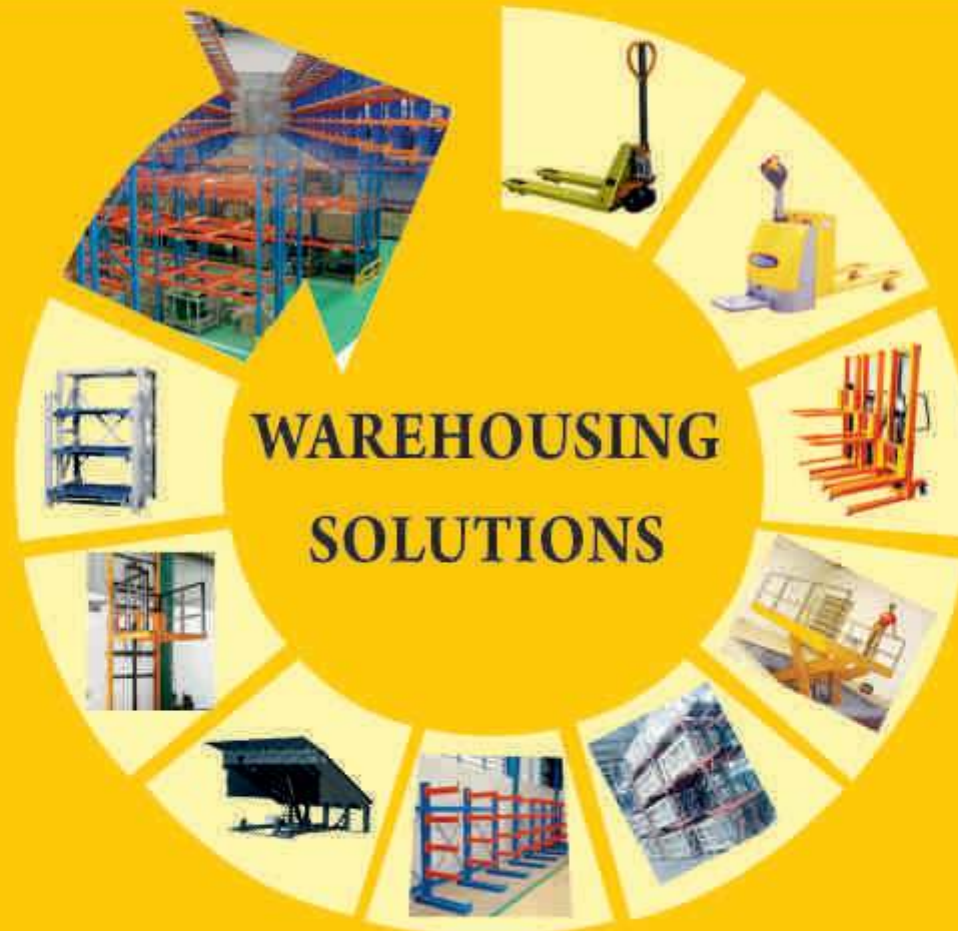




RANA MATERIAL HANDLING EQUIPMENTS PVT. LTD.





RANA Material Handling Equipments Pvt. Ltd. is manufacturer of revolutionising warehouse equipment and industrial racking with custom-designed solutions to satisfy specific customer requirements. Each customer's needs are met by our bespoke designs. Regardless of the industry, our technology is the ideal answer for any Ware Housing Solution.

We have sharpened our talents in the appropriate subject in a short period of time. We have developed cost-effective solutions based on our significant knowledge and Experience in the field of Warehousing.

Furthermore, we outperform our competition in terms of technical expertise, superior products, and a dedication to continual improvement in providing solutions based on their significant domain experience and networking with the latest technological product suppliers.

We feel that the greatest way to do business is to have integrity, honesty, and a great product that will help us expand our business in India and internationally. Our mission is to provide our clients with a value-added solution that allows them to run their businesses easily and profitably.

The **“RANA”** premium name in Warehousing Solution in India and International.



HYDRAULIC PALLET TRUCK



Hand Pallet Truck

MODEL NO.	CAPACITY	FORK LENGTH	FORK WIDTH	LIFTING HEIGHT
RHPT 10	1000 Kgs.	1220 mm	550/685 mm	85-200 mm
RHPT 20	2000 Kgs.	1220 mm	550/685 mm	85-200 mm
RHPT 25	2500 Kgs.	1220 mm	550/685 mm	85-200 mm
RHPT 30	3000 Kgs.	1220 mm	550/685 mm	85-200 mm
RHPT 50	5000 Kgs.	1220 mm	550/685 mm	85-200 mm



Battery Operated Pallet Truck

MODEL NO.	CAPACITY	FORK LENGTH	FORK WIDTH	LIFTING HEIGHT
REHPT 20	2000 Kgs.	1150 mm	550/685 mm	85-200 mm

Stainless Steel Hand Pallet Truck

MODEL NO.	CAPACITY	FORK LENGTH	FORK WIDTH	LIFTING HEIGHT
RSSPT 15	1500 Kgs.	1220 mm	550/685 mm	85-200 mm
RSSPT 20	2000 Kgs.	1220 mm	550/685 mm	85-200 mm

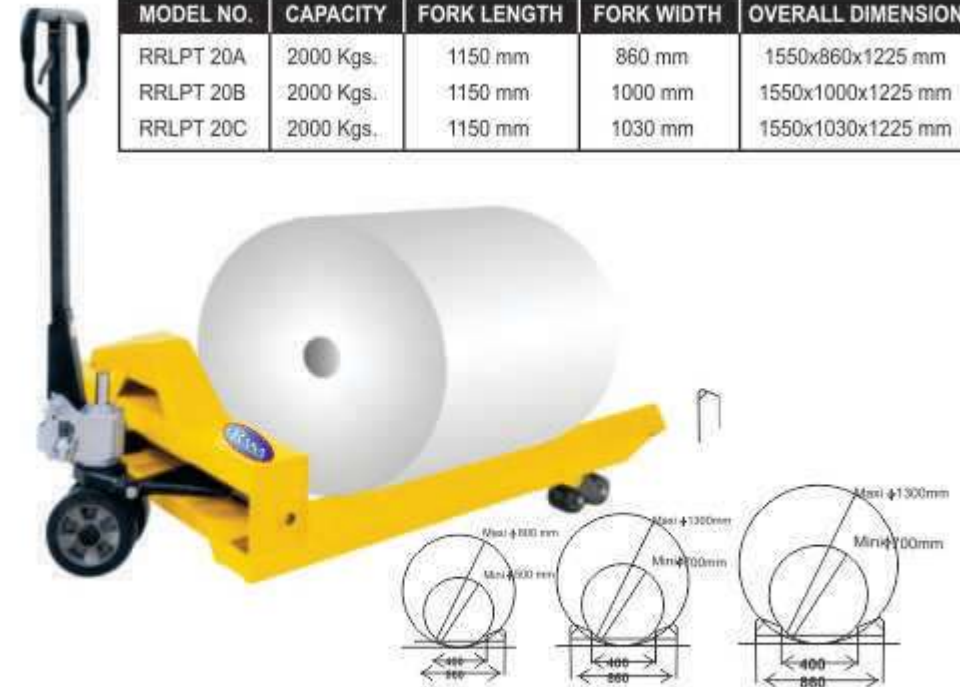


Semi Electric Pallet Truck

MODEL NO.	CAPACITY	LIFTING HEIGHT
RSHPT -15	1500 Kgs.	85-200 mm

Paper Reel Lifter Hydraulic Pallet Truck

MODEL NO.	CAPACITY	FORK LENGTH	FORK WIDTH	OVERALL DIMENSION
RRLPT 20A	2000 Kgs.	1150 mm	860 mm	1550x860x1225 mm
RRLPT 20B	2000 Kgs.	1150 mm	1000 mm	1550x1000x1225 mm
RRLPT 20C	2000 Kgs.	1150 mm	1030 mm	1550x1030x1225 mm



ORDER PICKER



Battery Operated Hydraulic Order Picker

MODEL NO.	CAPACITY	LIFTING HEIGHT
RSEOP 2-27	300 Kgs.	2700 mm
RSEOP 2-33	300 Kgs.	2700 mm
RSEOP 1-40	350 Kgs.	4000 mm
RSEOP 1-45	325 Kgs.	4500 mm



Semi Battery Hydraulic Order Picker

MODEL NO.	CAPACITY	LIFTING HEIGHT
RSEOP 2-27	300 Kgs.	2700 mm
RSEOP 2-33	300 Kgs.	2700 mm
RSEOP 1-40	300 Kgs.	4000 mm
RSEOP 1-45	300 Kgs.	4500 mm



Hydraulic Drum Lifter

MODEL NO.	CAPACITY	LIFT HEIGHT
RHDL 350	350 Kgs.	1400 mm

Manual Drum Carrier



HYDRAULIC STACKER



Hand Operated Manual Stacker

MODEL NO.	CAPACITY	LIFTING HEIGHT
RHST 10-16	1000 Kgs.	1600 mm
RHST 10-20	1000 Kgs.	2000 mm
RHST 10-25	1000 Kgs.	2500 mm
RHST 10-30	1000 Kgs.	3000 mm
RHST 15-16	1500 Kgs.	1600 mm
RHST 15-20	1500 Kgs.	2000 mm
RHST 15-25	1500 Kgs.	2500 mm
RHST 20-16	2000 Kgs.	1600 mm

Semi-Electric Stacker



MODEL NO.	CAPACITY	LIFTING HEIGHT
RHSEST 10-16	1000 Kgs.	1600 mm
RHSEST 10-20	1000 Kgs.	2000 mm
RHSEST 10-25	1000 Kgs.	2500 mm
RHSEST 10-30	1000 Kgs.	3000 mm
RHSEST 10-35	1000 Kgs.	3500 mm
RHSEST 15-16	1500 Kgs.	1600 mm
RHSEST 15-20	1500 Kgs.	2000 mm
RHSEST 15-25	1500 Kgs.	2500 mm
RHSEST 15-30	1500 Kgs.	3000 mm
RHSEST 15-35	1500 Kgs.	3500 mm
RHSEST 20-16	2000 Kgs.	1600 mm

Battery Operated Elec. Reach Truck

MODEL NO.	CAPACITY	LIFTING HEIGHT	REACH
RHERT 10-16	1000-2000kg	8 upto 20 mtr	450-500 MM



Battery Operated Electric Stacker



MODEL NO.	CAPACITY	LIFTING HEIGHT
RHEST 10-20	1000 Kgs.	2000 mm
RHEST 10-25	1000 Kgs.	2500 mm
RHEST 10-30	1000 Kgs.	3000 mm
RHEST 10-35	1000 Kgs.	3500 mm
RHEST 10-40	1000 Kgs.	4000 mm
RHEST 10-45	1000 Kgs.	4500 mm
RHEST 10-60	1000 Kgs.	6000 mm
RHEST 15-25	1500 Kgs.	2500 mm
RHEST 15-30	1500 Kgs.	3000 mm
RHEST 15-35	1500 Kgs.	3500 mm
RHEST 15-45	1500 Kgs.	4500 mm
RHEST 15-63	1500 Kgs.	6300 mm

HYDRAULIC SCISSORS LIFTING



Pit Mount Hydraulic Scissor Lift

Sr.No.	MODEL NO.	PLATFORM SIZE	CAPACITY	LIFT HEIGHT IN MM
1.	RPMSL 10-25x15	2500x1500	1.0 ton	1600
2.	RPMSL 10-25x20	2500x2000	1.0 ton	1600
3.	RPMSL 10-30x15	3000x1500	1.0 ton	1600
4.	RPMSL 10-30x20	3000x2000	1.0 ton	1600
5.	RPMSL 20-25x15	2500x1500	2.0 ton	1600
6.	RPMSL 20-25x20	2500x2000	2.0 ton	1600
7.	RPMSL 20-30x15	3000x1500	2.0 ton	1600
8.	RPMSL 20-30x20	3000x2000	2.0 ton	1600
9.	RPMSL 30-25x15	2500x1500	3.0 ton	1600
10.	RPMSL 30-25x20	2500x2000	3.0 ton	1600
11.	RPMSL 30-30x15	3000x1500	3.0 ton	1600
12.	RPMSL 30-30x20	3000x2000	3.0 ton	1600
13.	RPMSL 50-25x15	2500x1500	5.0 ton	1600
14.	RPMSL 50-25x20	2500x2000	5.0 ton	1600
15.	RPMSL 50-30x15	3000x1500	5.0 ton	1600
16.	RPMSL 50-30x20	3000x2000	5.0 ton	1600
17.	RPMSL 50-30x30	3000x3000	5.0 ton	1600



Zero Close Height Scissor Lift

Sr.No.	MODEL NO.	PLATFORM SIZE	CAPACITY	LIFT HEIGHT IN MM
1.	RCHSL 10-12	1800X1200	1000	1250
2.	RCHSL 15-12	1800X1200	1500	1250
3.	RCHSL 20-12	1800X1200	2000	1250
4.	RCHSL 10-12	1800X1200	1000	2000
5.	RCHSL 15-12	1800X1200	1500	2000



Die Loader

Sr.No.	MODEL NO.	PLATFORM SIZE	CAPACITY	LIFT HEIGHT IN MM
1.	RDLSL 50-12X60	1200x600	0.5 ton	1500
2.	RDLSL 15-12X60	1200x600	1.5 ton	1500
3.	RDLSL 10-12X60	1200x600	1.0 ton	1500
4.	RDLSL 10-12X10	1200x1000	1.0 ton	1500



ZERO HEIGHT SCISSOR LIFT



Sr.No.	MODEL NO.	PLATFORM SIZE	CAPACITY	LIFT HEIGHT IN MM
1.	RCHMSL 10-12	1800X1200	1000	1250
2.	RCHMSL 15-12	1800X1200	1500	1250
3.	RCHMSL 20-12	1800X1200	2000	1250
4.	RCHMSL 10-12	1800X1200	1000	2000
5.	RCHMSL 15-12	1800X1200	1500	2000

HYDRAULIC SCISSORS LIFTING

TANDEM SCISSORS LIFT



TANDEM SCISSORS LIFT SPECIFICATION

Sr.No.	MODEL NO.	PLATFORM SIZE	CAPACITY	LIFT HEIGHT IN MM
1.	RTSL 6-50X25	5000X2500	6.0 ton	1500
2.	RTSL 8-50X25	5000X2500	8.0 ton	1500
3.	RTSL 10-50X25	5000X2500	10.0 ton	1500

OR CUSTOMIZED AS PER CUSTOMER REQUIREMENT

HYDRAULIC PLATFORM LIFT



GOODS SCISSORS LIFT SPECIFICATION

GOODS SCISSORS LIFT



Sr.No.	MODEL NO.	PLATFORM SIZE	CAPACITY	LIFT HEIGHT
1.	RHRSL 10-30X15	3000X1500	1.0 ton	10-14 feet
2.	RHRSL 10-30X20	3000X2000	1.0 ton	14-20 feet
3.	RHRSL 20-30X15	3000X1500	2.0 ton	10-14 feet
4.	RHRSL 20-30X20	3000X2000	2.0 ton	14-20 feet
5.	RHRSL 30-30X15	3000X1500	3.0 ton	10-14 feet
6.	RHRSL 30-30X20	3000X2000	3.0 ton	14-20 feet

CAR LIFT



CAR LIFT SPECIFICATION

Sr.No.	MODEL NO.	PLATFORM SIZE	CAPACITY	LIFT HEIGHT
1.	RPMSL 30-50X25 (CAR)	5000X2500	3.0 ton	10-12 feet
2.	RPMSL 30-50X25 (CAR)	5000X2500	3.0 ton	12-18 feet
3.	RPMSL 30-50X25 (CAR)	5000X2500	3.0 ton	18-22 feet

HYDRAULIC DOCK LEVELER



Sr.No.	MODEL NO.	POINT LOAD	DIMENSION IN MM
1.	RHDL920-25	9.0 ton	2000x2500
2.	RHDL920-27	9.0 ton	2000x2700
3.	RHDL920-30	9.0 ton	2000x3000
4.	RHDL921-25	9.0 ton	2100x2500
5.	RHDL921-27	9.0 ton	2100x2700
6.	RHDL921-30	9.0 ton	2100x3000
7.	RHDL620-25	6.0 ton	2000x2500
8.	RHDL620-27	6.0 ton	2000x2700
9.	RHDL620-30	6.0 ton	2000x3000
10.	RHDL621-25	6.0 ton	2100x2500
11.	RHDL621-27	6.0 ton	2100x2700
12.	RHDL621-30	6.0 ton	2100x3000
13.	RHDL1220-27	12.0 ton	2000x2700
14.	RHDL1520-30	15.0 ton	2000x3000



HYDRAULIC DOCK LEVELER



Hydraulic Movable Dock Ramp

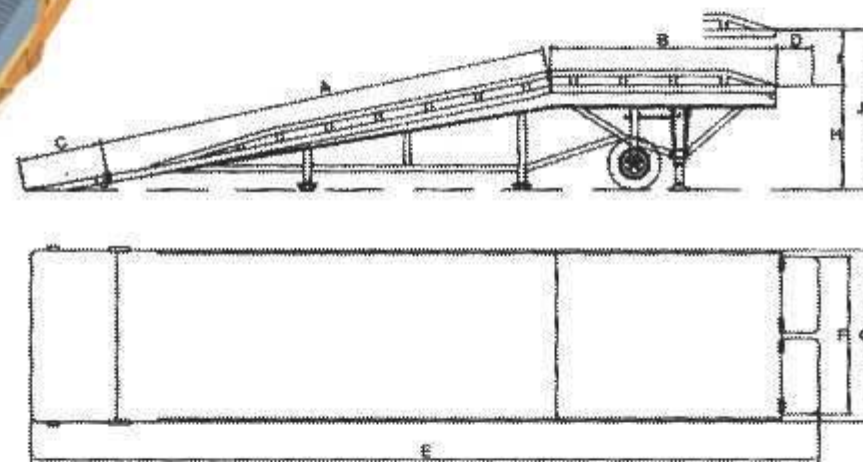


Hydraulic Dock Ramp



Mechanical Dock Ramp

Height Adjusters



Movable dock ramp

Model	Capacity (Kg.)	Platform Size (mm)									
		A	B	C	D	E	F	G	H	J	I
RMDR 10-21	10000	6000	3000	1000	300	10300	1800	2100	1200	1600	400
RHDR 10-21	10000	6000	3000	1000	300	10300	1800	2100	1200	1600	400

HYDRAULIC GOODS LIFT



Hydraulic goods Lift :-

We are manufacturer and supplier of Hydraulic Goods lift. We are offering a quality range of **Hydraulic goods lift** to the esteemed customers. Our range of Goods lift is made available in different models, capacities and other specifications to cater to varied clients' requirements. Moreover, we check these Lifts on certain well-defined parameters, before their despatch to the clients' end

Hydraulic Goods Lift

MODEL NO.	CAPACITY	LIFTING HEIGHT	PLATFORM SIZE	CLOSED HEIGHT
RHGL 10-40	1000 Kgs.	4000 mm	1500x2000 mm	300 mm
RHGL 10-60	1000 Kgs.	6000 mm	1500x2000 mm	300 mm
RHGL 10-80	1000 Kgs.	8000 mm	1500x2000 mm	300 mm
RHGL 10-10	1000 Kgs.	10000 mm	1500x2000 mm	300 mm
RHGL 20-40	2000 Kgs.	4000 mm	1500x2000 mm	300 mm
RHGL 20-60	2000 Kgs.	6000 mm	1500x2000 mm	300 mm
RHGL 20-80	2000 Kgs.	8000 mm	1500x2000 mm	300 mm
RHGL 20-10	2000 Kgs.	10000 mm	1500x2000 mm	300 mm
RHGL 30-40	3000 Kgs.	4000 mm	1500x2000 mm	300 mm
RHGL 30-60	3000 Kgs.	6000 mm	1500x2000 mm	300 mm

OR CUSTOMIZED AS PER CUSTOMER REQUIREMENT



Wall Mount Stacker :-

We are manufacturer and supplier of Hydraulic Wall mount stacker. We are offering a quality range of **Wall Mount stacker** to the esteemed customers. Our range of Wall mount stacker is made available in different models, capacities and other specifications to cater to varied clients' requirements. Moreover, we check these trucks on certain well-defined parameters, before their despatch to the clients'

Wall mount stacker / Goods Lift

MODEL NO.	CAPACITY	LIFTING HEIGHT	PLATFORM SIZE	CLOSED HEIGHT
RWMST 10-40	1000 Kgs.	4000 mm	1200x1200 mm	300 mm
RWMST 10-50	1000 Kgs.	5000 mm	1200x1200 mm	300 mm
RWMST 10-67	1000 Kgs.	6700 mm	1200x1200 mm	300 mm
RWMST 10-100	1000 Kgs.	10000 mm	1200x1200 mm	300 mm
RWMST 15-45	1500 Kgs.	4500 mm	1200x1200 mm	300 mm
RWMST 15-70	1500 Kgs.	7000 mm	1200x1200 mm	300 mm

OR CUSTOMIZED AS PER CUSTOMER REQUIREMENT UP TO 12 METRE

STANDARDS ITEMS



TOOLS STORAGE TROLLEY

Model	RTST-100	RTST-100A	RTST-100B	RTST-100-C
Capacity (Kg.)	100	100	100	100
Over all Height (mm)	795	795	795	795
Length x Width (mm)	600x600	600x600	600x600	600x600
No. of Drawer (mm)	2x50-1x100 1x150-1x200	1x50-1x100	1x50-1x100	
Space between Shelves (mm)	1x190	1x190	1x190-1x405	
Wheel ϕ (mm) with brake 2 fixed 2 swivel	125	125	125	125

OR CUSTOMIZED AS PER CUSTOMER REQUIREMENT



PLATFORM TRUCK

Models / Specification	RPT-200	RPT-500	RPT - 1000
Capacity (kg.)	200	500	1000
Over all Dimensions	600x400x200/950	600x400x250/950	600x400x300/950
L x W x H/H (mm)	800x500x200/950 900x600x200/950 1200x800x200/950	800x500x250/950 900x600x250/950 1200x800x250/950	800x500x300/950 900x600x300/950 1200x800x300/950
Wheel x B (mm)	100 x 50	125 x 40	150 x 50



STACKABLE BIN

Model	SBR 1000	SBR -100 A	SBR -1000 B	SBR -1000 C
Width x Length	800 x 1200	600 x 800	800 x 1200	1000 x 1200
Height (mm)	985	650	650	650
Inside Height (mm)	790	480	480	480
Capacity in Stacking	1000 kg	1000 kg	1000 kg	1000 kg
3x1000	3000 kg	4000 kg	4000 kg	4000 kg



PLATFORM TRUCK BOX TYPE

Models / Specification	RPTB-200	RPTB-500	RPTB - 1000
Capacity (kg.)	200	500	1000
Over all Dimensions	600x400x200/950	600x400x250/950	600x400x300/950
L x W x H/H (mm)	800x500x200/950 900x600x200/950 1200x800x200/950	800x500x250/950 900x600x250/950 1200x800x250/950	800x500x300/950 900x600x300/950 1200x800x300/950
Wheel x B (mm)	100 x 50	125 x 40	150 x 50



STEEL BOX

Model	Size				Capacity (kg.)
	Length	Width	Height	Legs Height	
RSB 201	1000	800	160	120	500-2000
RSB 202	1000	1000	160	120	500-2000
RSB 203	1200	800	160	120	500-2000
RSB 204	1200	1000	160	120	500-2000



UTILITY CARTS & TABLE TROLLEY

Models	RUC - 200	RUC - 200A	RUC - 200B
Capacity (Kg.)	200	200	200
Length x Width (mm)	660 / 495	660 / 495	660 / 495
Over all Height (mm)	780	780	780
Wheel x B (mm)	100	100	100

PIPE & JOINTS SYSTEM



RJ 1



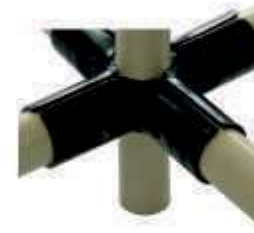
RJ 2



RJ 3



RJ 4



RJ 5



RJ 6



RJ 7



RJ 8



RJ 9



RJ 10



RJ 11



RJ 12



RJ 13



RJ 14



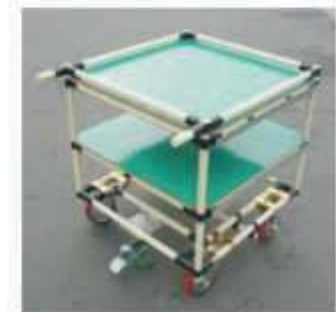
RJ 15



RJ 16



RJ 17



PIPE & JOINTS SYSTEM

Roller Track

It can be easily combined to a pipe.
Being light and easy to use, the Flow Rack, using the placon can improve the efficiency of goods circulation due to its easiness to control quality and stock by the first in first out rules, and easiness to cope with the diversification of goods

Materials

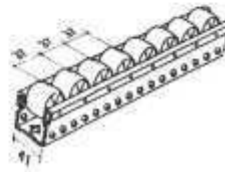
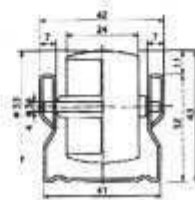
Frame	(SPGI)
Roller	(PE)
Shaft	(SPACE)

COMPRESSIVE STRENGTH

Roller : about 73 kg
Per 1,000 mm of Roller Track
about 245 kg

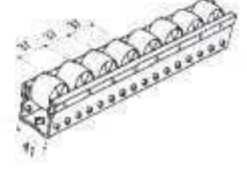
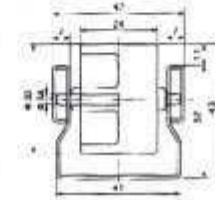
40 Type

40 Type Roller Track (STANDARD)



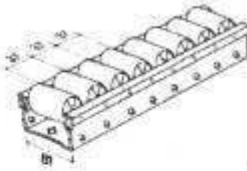
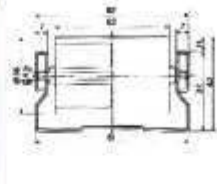
40 Type

40 Type Roller Track (STANDARD)



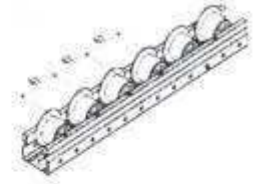
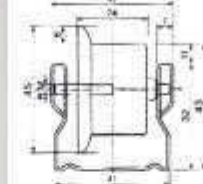
80 Type

80 Type Roller Track (STANDARD)



40 Type

40 Type Roller Track (STANDARD)



RACKING SYSTEMS



Pallet Storage



Hi-Rise Storage System



Long Span Shelving Storage System



Pallet Storage System



Pallet Storage System



Multi Tier Storage System

CANTILEVER STORAGE SYSTEM



Cantilever Storage System



Cantilever Storage System



Cantilever Storage System



Cantilever Storage System

MEZZANINE FLOOR



Two Tier Storage System



Modular Mezzanine Floor

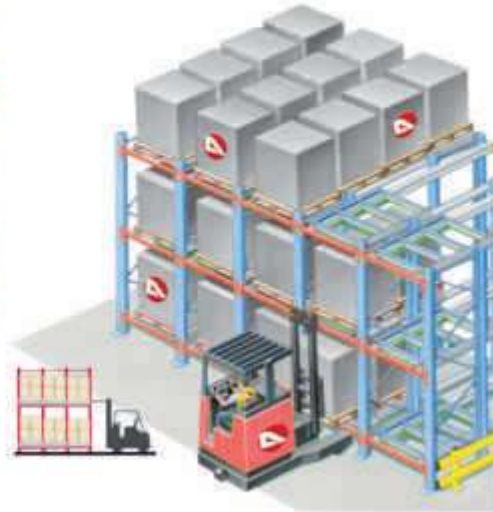


Modular Mezzanine Floor

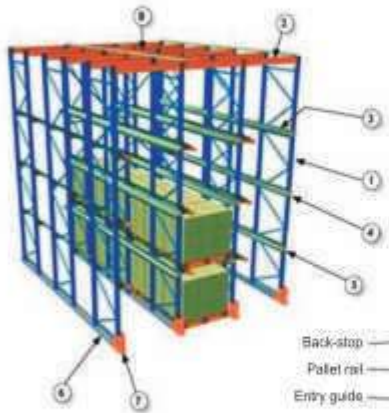


Modular Mezzanine Floor

PUSH BACK RACK SYSTEM



DRIVE IN RACK SYSTEM



1. The frame (upright)
2. The top-beam
3. The pallet rail
4. The support arm
5. The entry on the pallet rail
6. The ground guidance
7. The entry on the ground guidance
8. The bracing



Drive in Rack System



PALLET FLOW SYSTEM

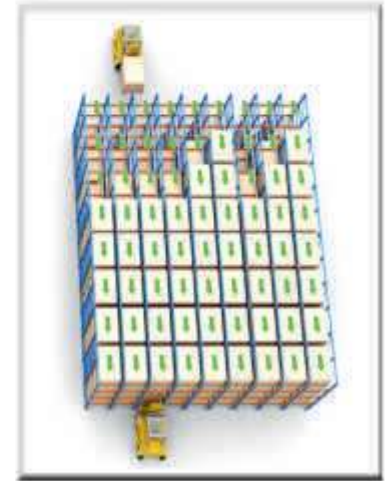


Conventional Pallet Rack Storage



← VS. →

High Density, Space-Saving Pallet Flow



CARTON FLOW SYSTEM



SLOTTED ANGLE



Bolt Less Racking System



Slotted Angle Storage System (Light Duty)



Slotted Angle Storage System (Medium Duty)

Size(L*D<MM>		Capacity(kg)/shelf	
900*300		100	
900*450		150	
900*600		200	
1200*450		150	
1200*600		150	
1500*450		100	
1500*600		100	
1800*450*		100	
1800*600		100	
Angle	40x40x2	Pitch	Height
Steelsize:	60x40x2	50mm	1000-6000mm
	80x40x2		



Slotted Angle Rack

Model	Capacity Per Self	Length	Depth	Height
RSAR 9-3	150 kg.	900 mm	600 mm	1500-2500 mm
RSAR 9-4	150 kg.	900 mm	450 mm	1500-2500 mm
RSAR 9-6	150 kg.	900 mm	300 mm	1500-2500 mm



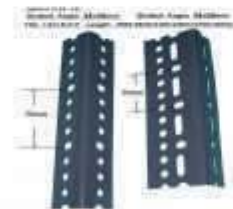
Deck Panel



Slotted Angle Accessories



Pigeon Rack



Slotted Angle 40 x 40



Slotted Angle 40x80



Slotted Angle 40x60

MOULD RACK



Die / Mould Rack



Mould Rack



Height:
4 feet - 12 feet.

Tray size: w x d
a) 3ft x3 ft
b) 4ft x3 ft
c) 5ft x3 ft
d) 6ft x3 ft

Weight bearing-
"Safe Working Load"
a = 2000 kgs per tray
b = 1500 kgs per tray
c = 1200 kgs per tray
d = 1000kgs per tray

As per your need trays
can be manual drive or
Electric motor driven

Model	Capacity Per Tray	Width	Depth	Height
RMRS 20	2000 kg	1000 mm	1000 mm	2500 mm
RMRS 15	1500 kg	1200 mm	1000 mm	2500 mm
RMRS 12	1200 kg	1500 mm	1000 mm	2500 mm
RMRS 10	1000 kg	1800 mm	1000 mm	2500 mm

MODULAR ASSEMBLY TABLE



Modular Cart



Modular Table



Assembly Table



Our Clients



RANA MATERIAL HANDLING EQUIPMENTS PVT. LTD.

Works Plot No. G-13-16, UPSIDC, Phase - I, M.G. Road, Masoori, Ghaziabad - 201302, Phone : 8130397255, 06399497250

E-mail : info@ranamhe.com, info@ranastorage.com, Website : www.ranamhe.com/ www.ranastorage.com